



**Stoneacre**  
Properties



### **Barton Court, Leeds, LS15 9BE**

**£215,000**

Offered to the market is this beautifully presented three bedroom terrace house located on Barton Court, Leeds. The property is situated in a sought after location close to all local amenities including: shops, schools and transport links. The property briefly comprises of: entrance, lounge/diner, kitchen, first floor landing, three bedrooms and family bathroom. Externally the property benefits from a fully enclosed rear garden with grass laid to lawn. To the front of the property is grass laid to lawn. Garage providing storage space. This property is not one to be missed to make this house your home please contact the office today to arrange your viewing.



## ENTRANCE

Door to front elevation. Stairs leading to first floor landing.

## LOUNGE/DINER



Double glazed window to the front elevation. Two central heating radiators. Space for dining table and chairs. French doors leading to the rear garden.

## KITCHEN



Range of wall and base units. Integrated oven with gas hob and extractor fan above. Plumbing for washing machine. Space for dishwasher. Space for fridge/freezer. Space for tumble dryer. Sink and drainer. Double glazed window to the rear elevation.

## FIRST FLOOR LANDING

Loft access. Central heating radiator.

## BEDROOM ONE



Double glazed window to the front elevation. Central heating radiator.

## BEDROOM TWO



Double glazed window to the rear elevation. Central heating radiator. Fitted wardrobes.

## BEDROOM THREE



Double glazed window to the front elevation. Central heating radiator. Storage cupboard.

## BATHROOM



Double glazed frosted window to the rear elevation. Low flush w.c. Wash hand basin. Bath with shower above. Heated towel rail.

## EXTERNAL



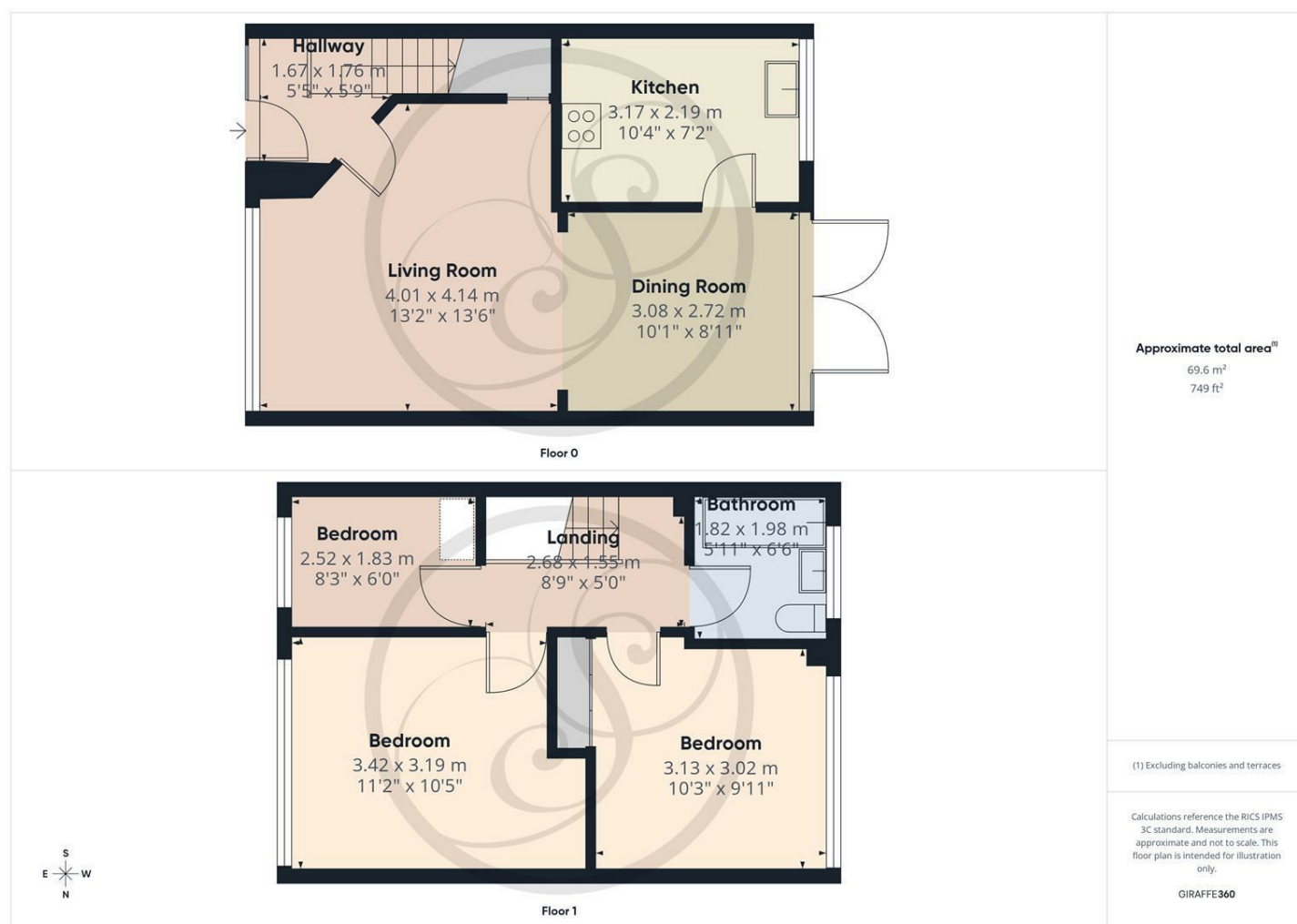
Grass laid to lawn to the front and rear of the property.

## GARAGE

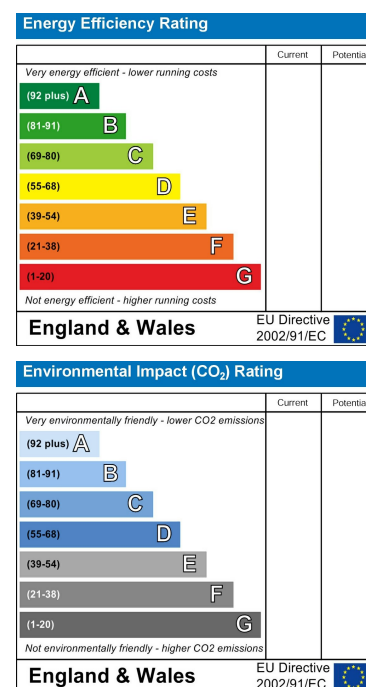


Providing storage.

## Floor Plan



## Area Map



These particulars, whilst believed to be accurate are set out as a general outline only for guidance and do not constitute any part of an offer or contract. Intending purchasers should not rely on them as statements of representation of fact, but must satisfy themselves by inspection or otherwise as to their accuracy. No person in this firm's employment has the authority to make or give any representation or warranty in respect of the property.

1 Colton Road, Leeds, West Yorkshire, LS15 9AA  
Tel: 0113 260 9111 Email:  
east@stoneacreproperties.co.uk <https://www.stoneacreproperties.co.uk>

**View properties before they come on the market by following us on Instagram - @stoneacreproperties**

